

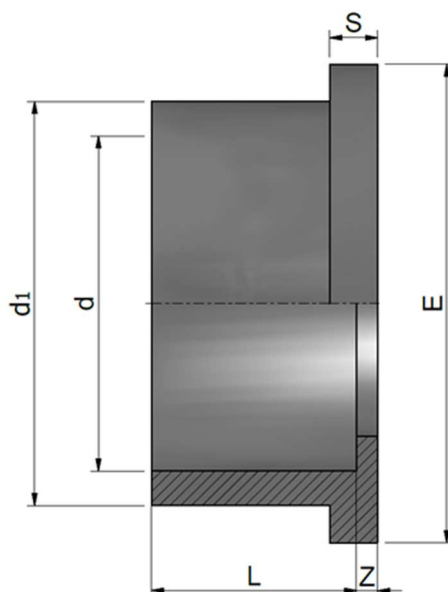
PVC-U Solvent welded metric fittings

PVC-U Raccordi per incollaggio metrici

SERRATED FACE STUB FLANGE

COLLARE RIGATO PER FLANGE

Rev. Oct 2020



| Code | d | d1 | L | Z | E | S | PN | Weight (g) |
|------------|-----|-----|-----|------|-----|----|----|------------|
| RDRQRD0200 | 20 | 27 | 16 | 3 | 34 | 3 | 16 | 10 |
| RDRQRD0250 | 25 | 33 | 19 | 4 | 41 | 3 | 16 | 16 |
| RDRQRD0320 | 32 | 41 | 22 | 4 | 50 | 7 | 16 | 25 |
| RDRQRD0400 | 40 | 50 | 26 | 3 | 61 | 8 | 16 | 41 |
| RDRQRD0500 | 50 | 61 | 32 | 4 | 73 | 9 | 16 | 60 |
| RDRQRD0630 | 63 | 76 | 38 | 4 | 90 | 10 | 16 | 105 |
| RDRQRD0750 | 75 | 90 | 44 | 5 | 106 | 10 | 16 | 160 |
| RDRQRD0900 | 90 | 108 | 52 | 4 | 125 | 11 | 16 | 280 |
| RDRQRD1100 | 110 | 131 | 62 | 5 | 149 | 12 | 16 | 445 |
| RDRQRD1250 | 125 | 148 | 70 | 6 | 169 | 12 | 16 | 540 |
| RDRQRD1400 | 140 | 165 | 77 | 8 | 189 | 13 | 16 | 740 |
| RDRQRD1600 | 160 | 188 | 87 | 7 | 214 | 13 | 16 | 1000 |
| RDRQRD2000 | 200 | 231 | 106 | 7 | 254 | 19 | 10 | 2000 |
| RDRQRD2250 | 225 | 248 | 119 | 9 | 273 | 20 | 10 | 1700 |
| RDRQRD2500 | 250 | 271 | 131 | 10 | 306 | 20 | 16 | 2140 |
| RDRQRD2800 | 280 | 307 | 147 | 14,5 | 327 | 32 | 10 | 3650 |
| RDRQRD3150 | 315 | 346 | 165 | 16 | 377 | 32 | 10 | 4950 |
| RDRQRD3550 | 355 | 386 | 184 | 8 | 431 | 30 | 5 | 6050 |
| RDRQRD4000 | 400 | 434 | 206 | 12 | 483 | 30 | 5 | 8100 |



NSF and WRAS certifications: only for valves with EPDM seals. Certifications and approvals are related to items declared on Official Listing or certificates. /
 Certificazioni NSF e WRAS: valide solo per le valvole con guarnizioni EPDM. Le certificazioni si riferiscono ai prodotti dichiarati nelle Official Listing o sui certificati stessi.